

# TCC INTERNET

## Setup and Configuration



Level One Router WBR 6002



For additional assistance, call our  
**Internet Help Desk at 1-888-655-8642**

Available 24 hours/day, 7 days/week

## Before You Begin

Please note the default settings listed below.

### Default Settings

<b>IP Address</b>	<b>192.168.0.1</b>
<b>User / Password</b>	<b>admin / password</b>
<b>Wireless Mode</b>	<b>Enable</b>
<b>Wireless SSID</b>	<b>WBR-6002</b>
<b>Security</b>	<b>None</b>

This Quick Installation Guide only describes the most basic situations and settings. Please consult the User Manual on the CD for more details.

Please have your Internet Service Provider's username, password or other connection details ready.

# Installation

**1.** Please power off your ADSL / Cable modem by unplugging the power adapter.

**2.** Attach the included antenna.



**3.** Connect your broadband internet connection to the wireless router's WAN port.



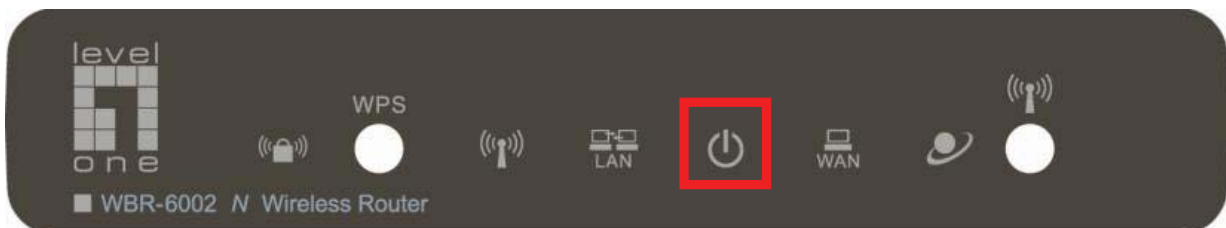
**4.** Connect the Computer LAN cable.



**5.** Plug in the Power Adapter.



**6.** Wait until the Power light remains on.  
This means the router is ready for use.



**7.** Power back on your ADSL / Cable modem by plugging in the power adapter.

**8.** Installation is now complete. You can now begin to configure the device.

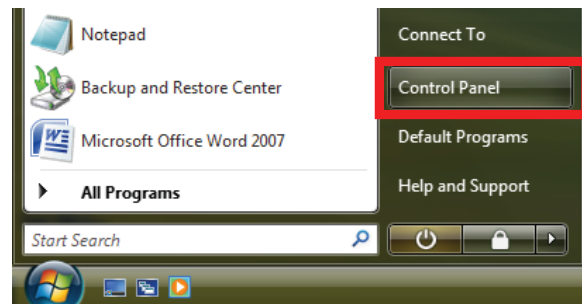
# Check Your Network Settings

(Windows XP / Vista)

1. Click the **Start Button** and open **Control Panel**.



Windows XP

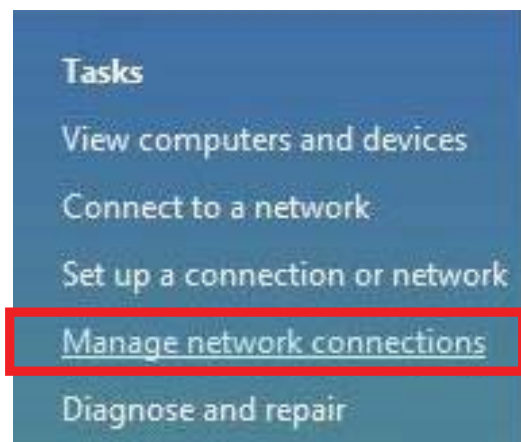


Windows Vista

2. Windows XP, double click **Network Connections**



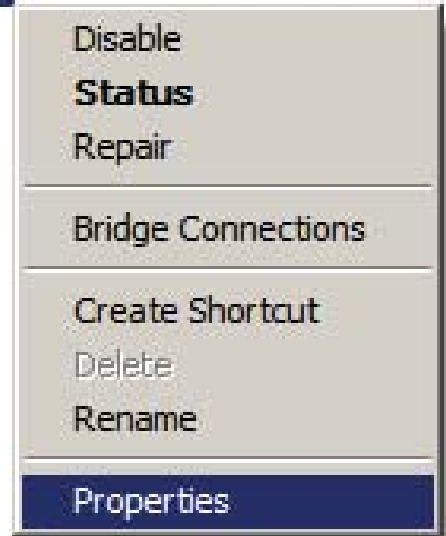
Windows Vista, click **View Network Status and Tasks** then **Manage Network Connections**



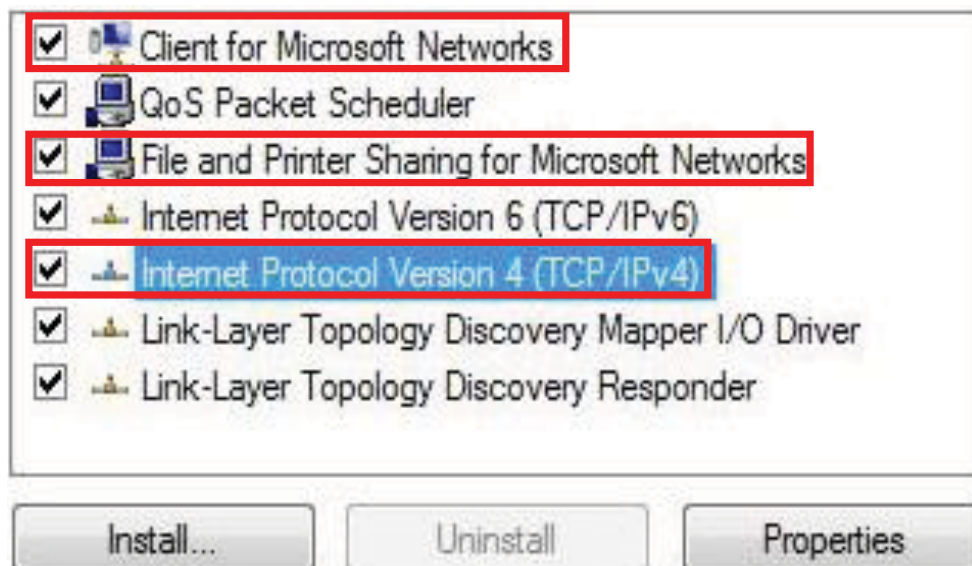
3. Right click on **Local Area Connection** and choose **Properties**.



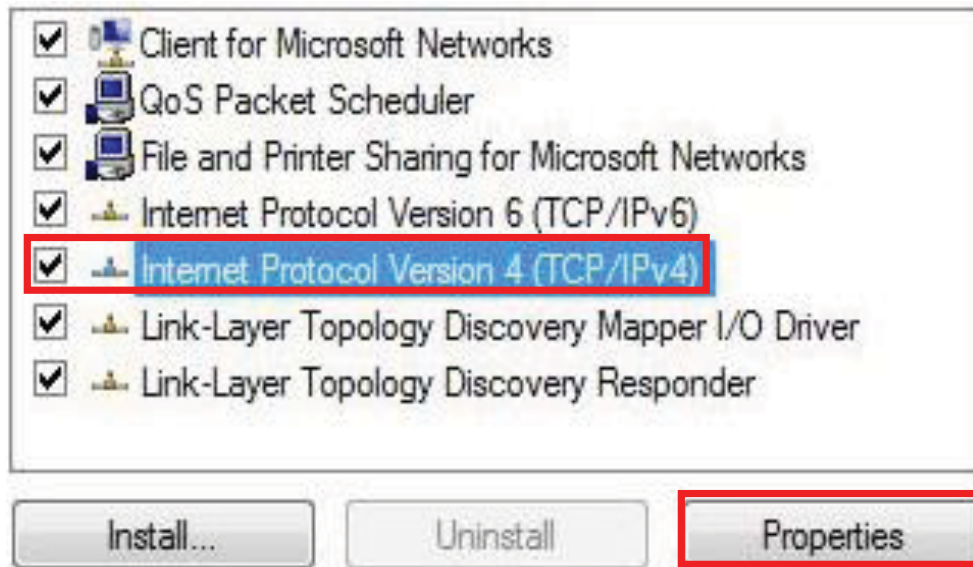
**Note:** The name could be different due to different Network Interfaces.



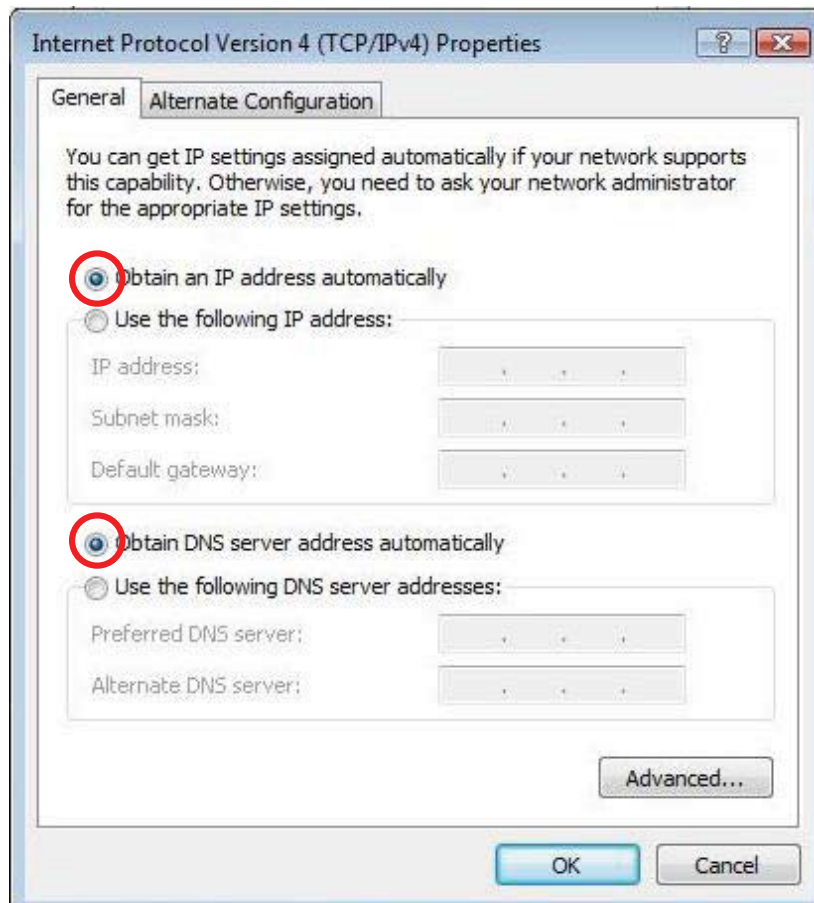
4. Check the **Client for Microsoft Networks**, **File and Printer Sharing**, and **Internet Protocol (TCP/IP)** is ticked. If not, please tick them.



5. Select **Internet Protocol (TCP/IP)** and click **[Properties]**



6. Select these two options and click **[OK]**.

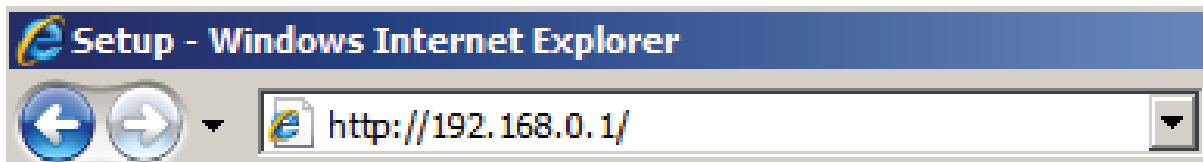


# Configuration

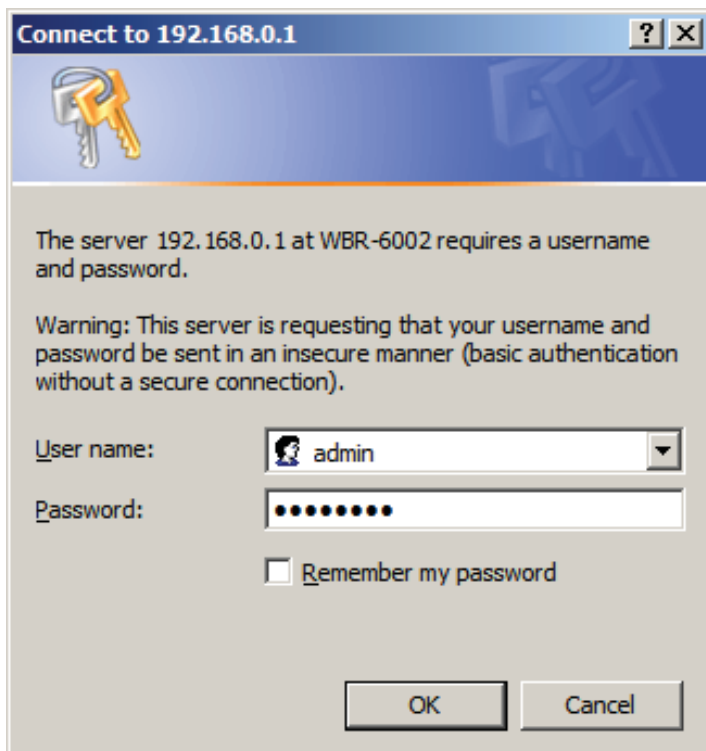
1. Shutdown and restart your computer.
2. Once restart is completed, start your WEB browser (Internet Explorer recommended).

In the *Address* box, enter the following:

**http://192.168.0.1**



3. Enter the Username and Password when prompted.

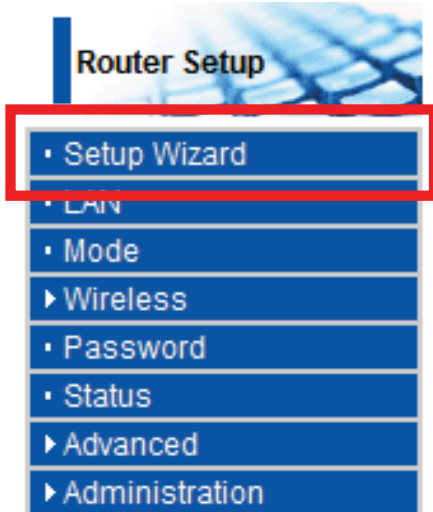


## Defaults

**Username:** admin

**Password:** password

4. You can select the language you want on the left drop down menu.
5. To set up the router, please click on the **Setup Wizard** on the left menu.



6. Please have your Internet Service Provider's Username, Password and other connection details ready.

Then follow the steps of the wizard to complete the setup.

A screenshot of the "Setup Wizard - Internet Access" configuration page. The page has a blue header with the title "Setup Wizard - Internet Access". Below the header, there is a text prompt: "Check the data provided by your ISP." followed by a blue square icon. The main content area is titled "Connection Method" and contains the following text: "If your ISP requires a User Name and Password for Internet Access, select 'Login'. Otherwise, select 'No Login'." Below this text are three options: "Login:" with a radio button and a dropdown menu showing "PPPoE"; "No Login:" with a radio button and a dropdown menu showing "Dynamic IP address"; and "NAT disable" with an unchecked checkbox. At the bottom of the page, there are three buttons: "< Back", "Next >", and "Cancel".

7. To set wireless settings, please click **Wireless** and then **Options**.

8. You can set your Wireless network name (SSID) and security encryption.

## Router Setup

• Setup Wizard

• LAN

• Mode

▼ Wireless

• Options

• Schedule

• MAC Filter

• WPS

• WDS

• Password

• Status

▶ Advanced

▶ Administration

## Wireless

### ▼ Options

#### Region

Region:

#### Multi SSID

SSID :

SSID1 (Service Set Identifier)

Broadcast SSID

Isolation Within SSID

Security Setting: SSID1 :Disabled

#### Options

802.11 Mode:

Channel NO.

Extension Channel.

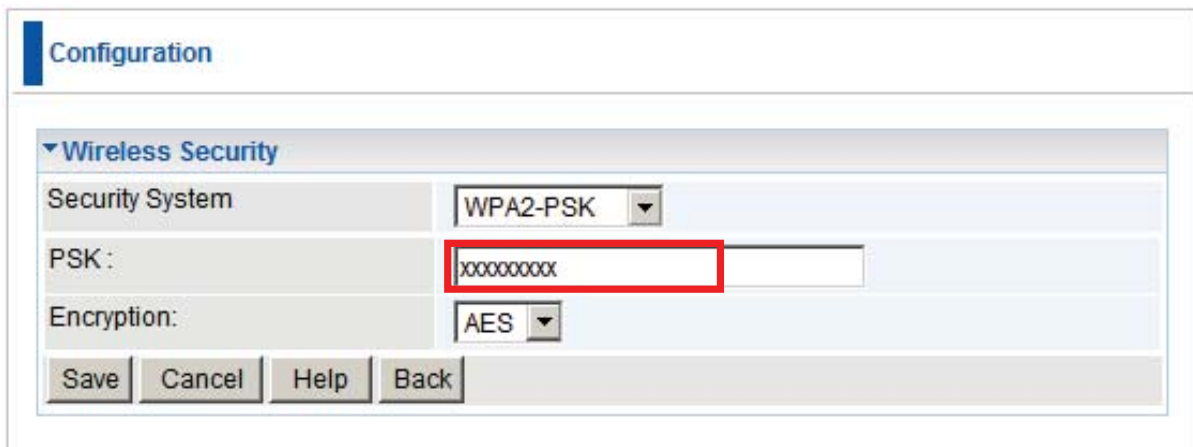
Isolation Between SSID

WMM support

Bandwidth:

9. LevelOne recommends WPA2-PSK AES for maximum wireless security. Please ensure that the same network security settings are used on both the router and wireless client.

Please type your passkey in the PSK field.



The image shows a screenshot of a router's configuration interface. At the top, there is a blue header with the word "Configuration". Below this, a section titled "Wireless Security" is expanded. It contains three rows of settings: "Security System" set to "WPA2-PSK", "PSK:" with a text input field containing "xxxxxxxx" (highlighted with a red box), and "Encryption:" set to "AES". At the bottom of the configuration area, there are four buttons: "Save", "Cancel", "Help", and "Back".

# Troubleshooting

## ***1. I cannot connect to the wireless router to start configuration.***

Check that you have connected the cable correctly between the router's LAN port and your computer. Also check if your computer is set to obtain an IP Address via DHCP (see above).

## ***2. I cannot connect to the Internet.***

Try to turn off the router and your ADSL/Cable modem. Wait 30 seconds and then turn the devices back on. If you still have problems, then access the router's configuration page and check whether the router has obtained an Internet IP Address in the **Status** page.

If the above does not work, please contact your Internet Service Provider to check whether there are any problems with the connection or settings.

### ***3. I cannot connect to the wireless network.***

Check whether the SSID network name and wireless security are the same on both the client and router. If you still have problems, then power off and on your router and restart your computer.

Your last solution will be forced to reset the router to factory default settings.

Make sure your router's Power light is not blinking and remains ON. Then press and hold the WPS and WLAN buttons for more than 10 seconds until you see the Power light blink 2 times, then release the buttons. The router is now reset to factory defaults.